



TAVOLA n°
A12
02/09/2020

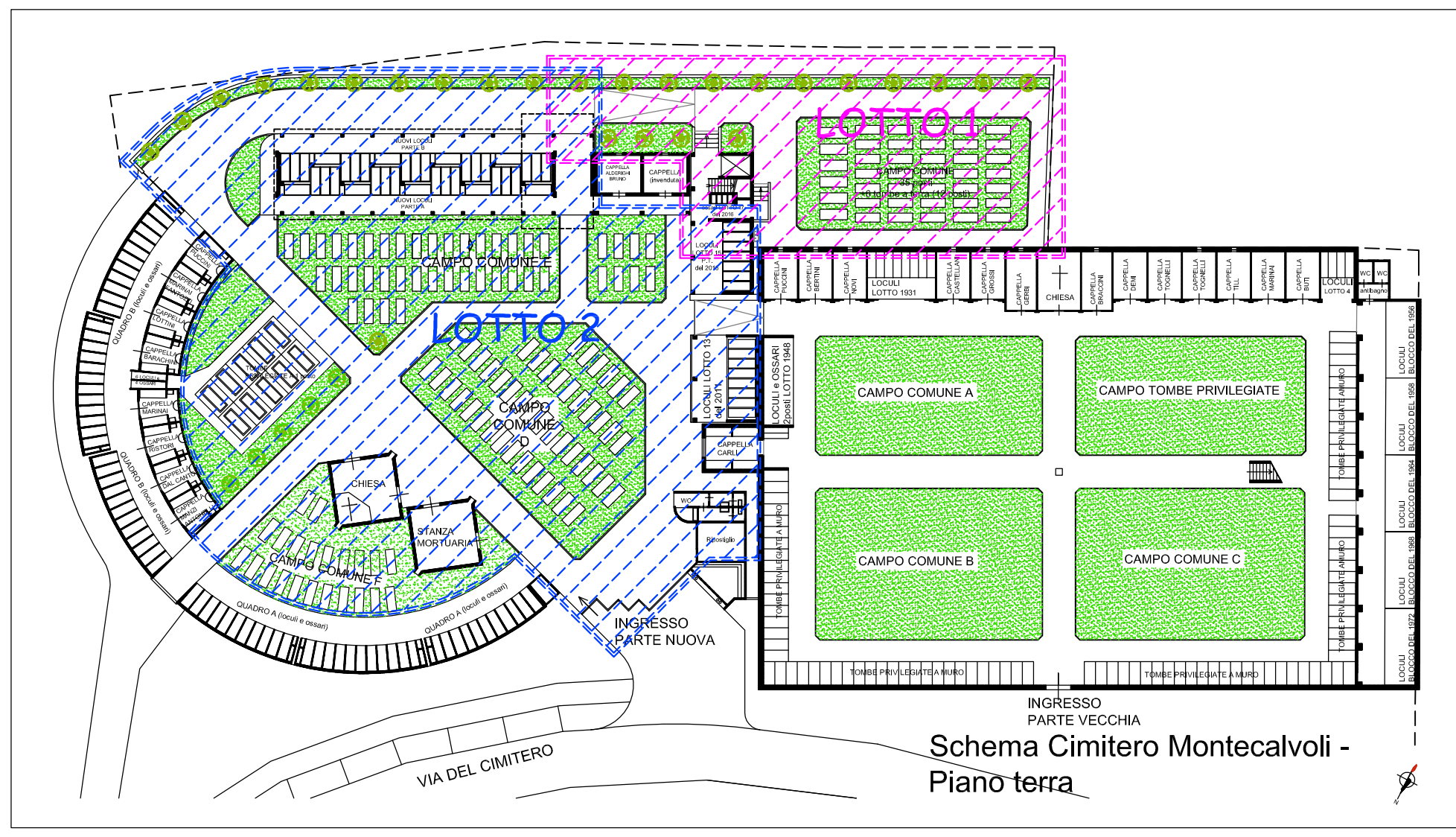
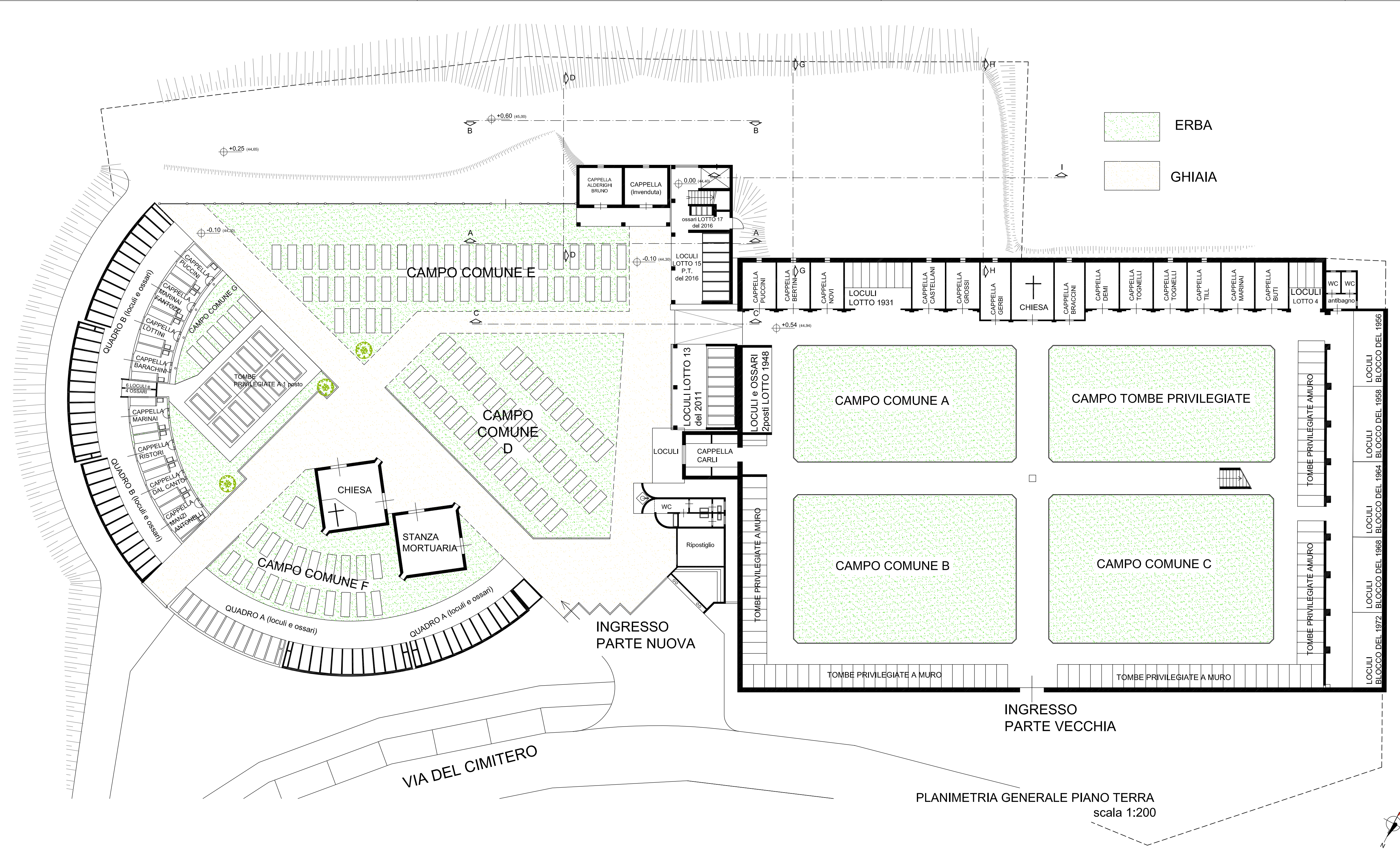
STATO ATTUALE
art. 33, comma 1, punto c) del DPR 207/2010

RESPONSABILE DEL PROCEDIMENTO: **Dott. Ing. Maurizio Iannotta**
Sevizio LL.PP. Comune di Santa Maria a Monte

PROGETTISTA E DIRETTORE LAVORI: **Architetto Fabiano Bertelli**

GEOLOGO: **Dott. Geol. Gian Paolo**

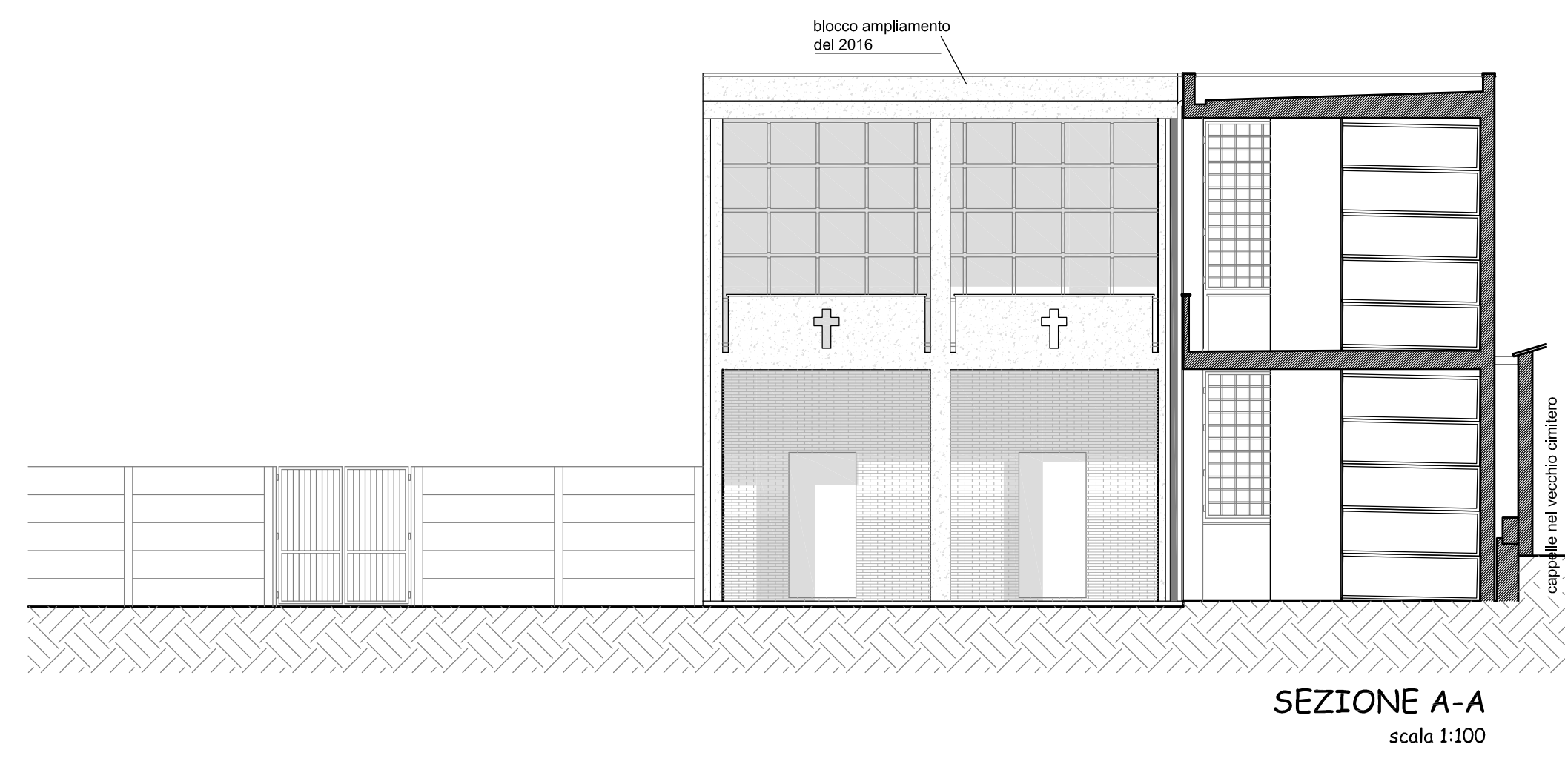
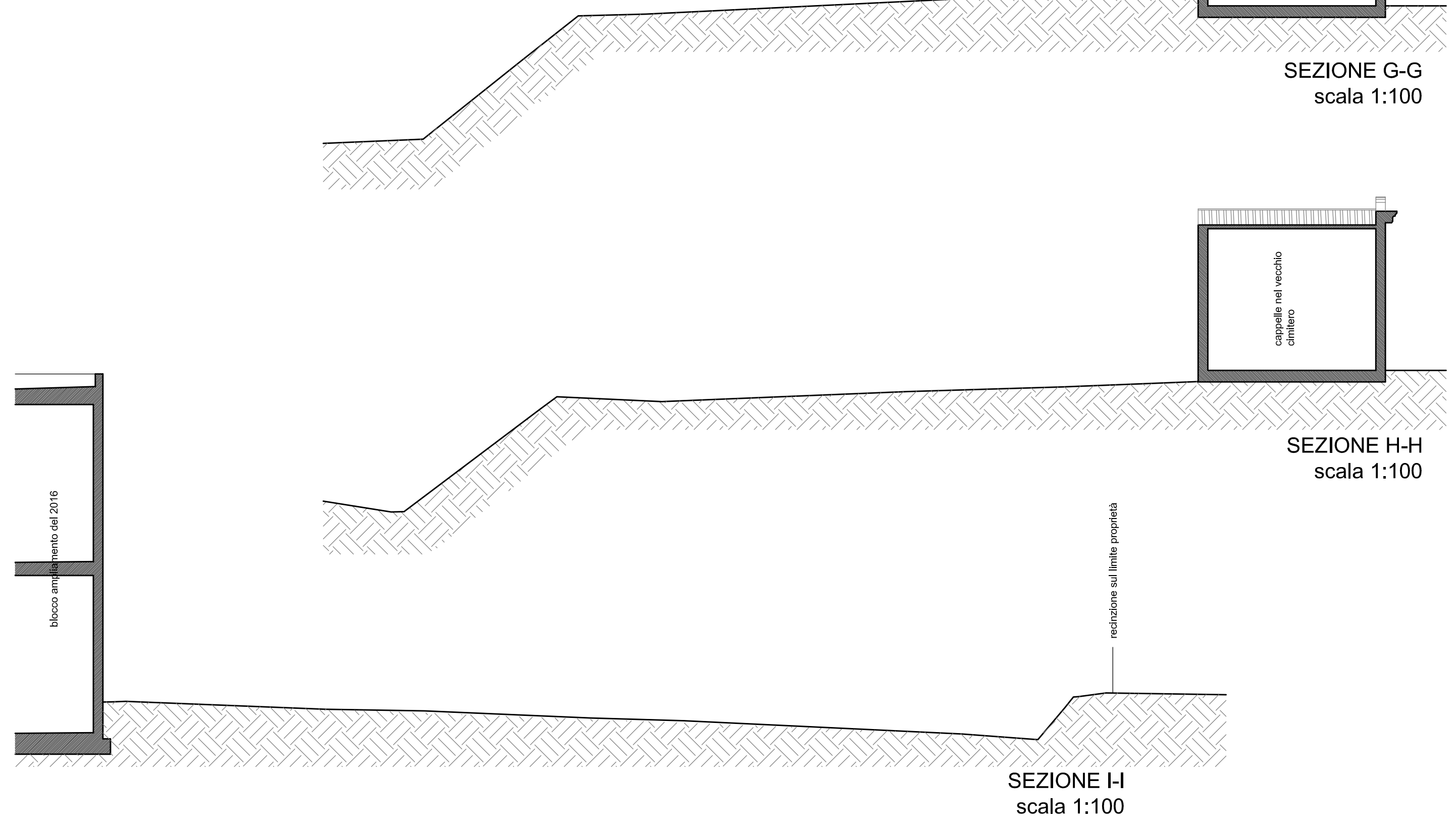
COORDINATORE ALLA SICUREZZA: **Architetto Fabiano Bertelli**



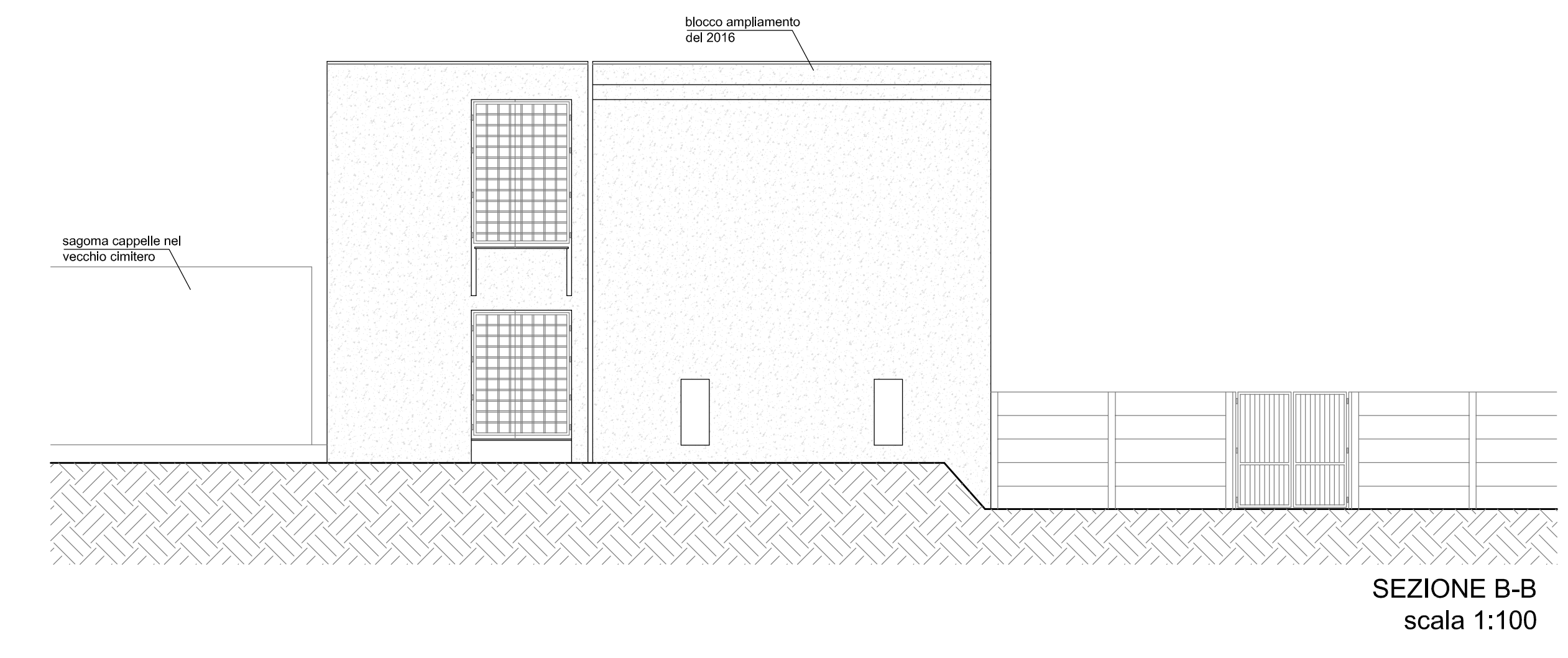
INDIVIDUAZIONE LOTTI DI INTERVENTO



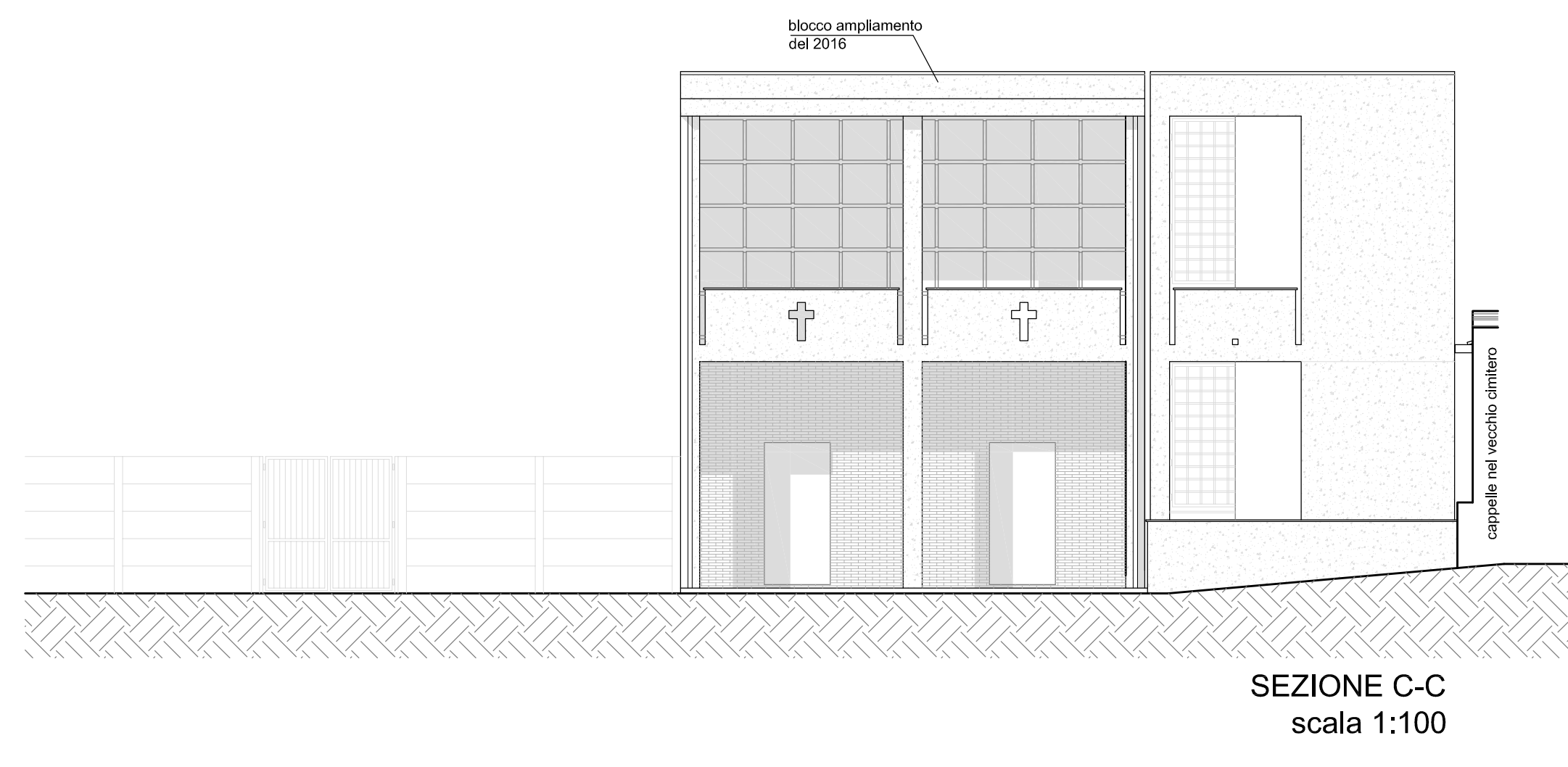
Schema Cimitero Montecalvoli - Piano terra



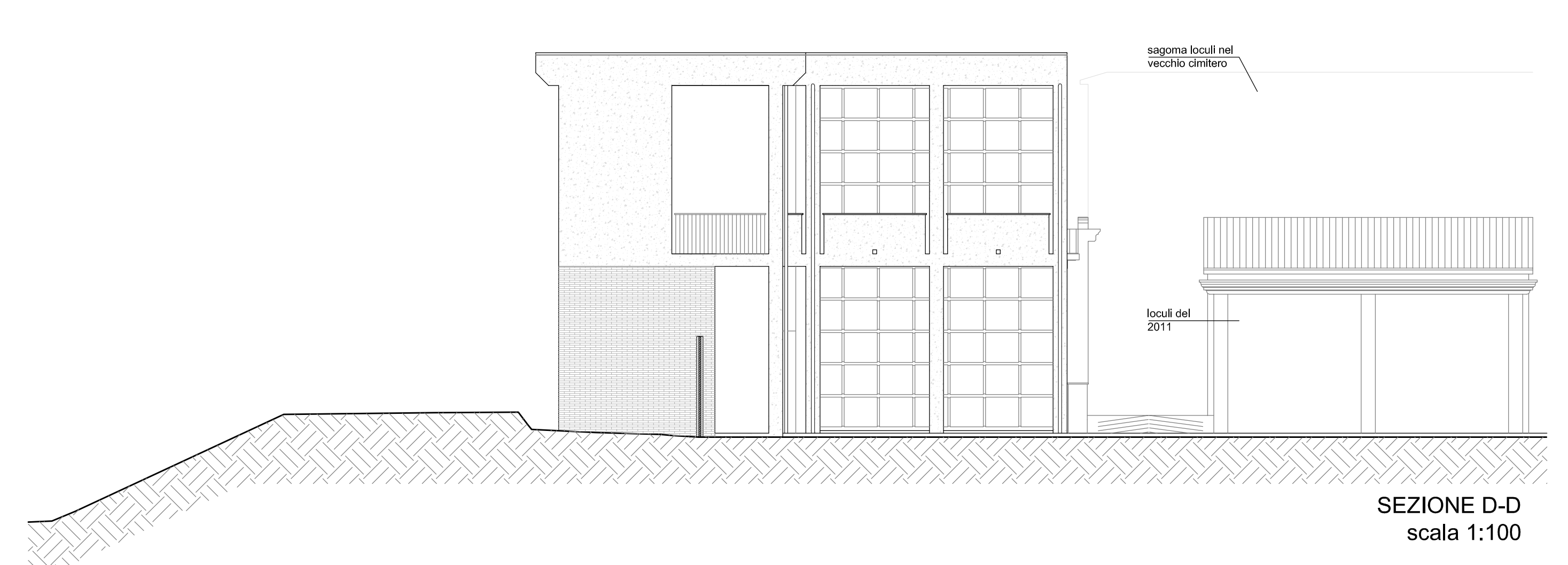
SEZIONE A-A
scala 1:100



SEZIONE B-B
scala 1:100



SEZIONE C-C
scala 1:100



SEZIONE D-D
scala 1:100